

# TopJet Distalizer

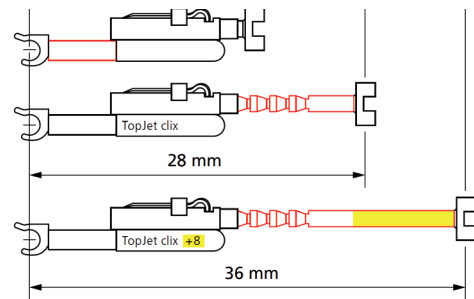
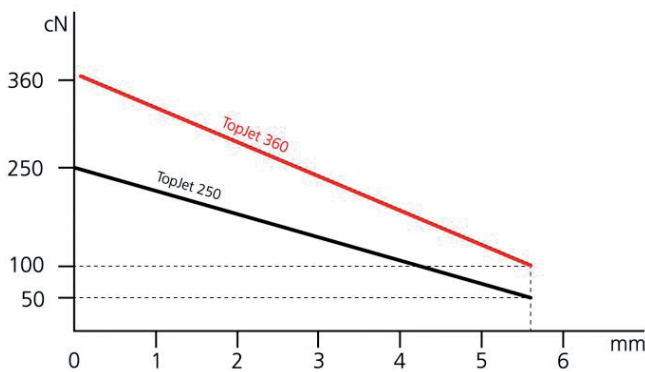
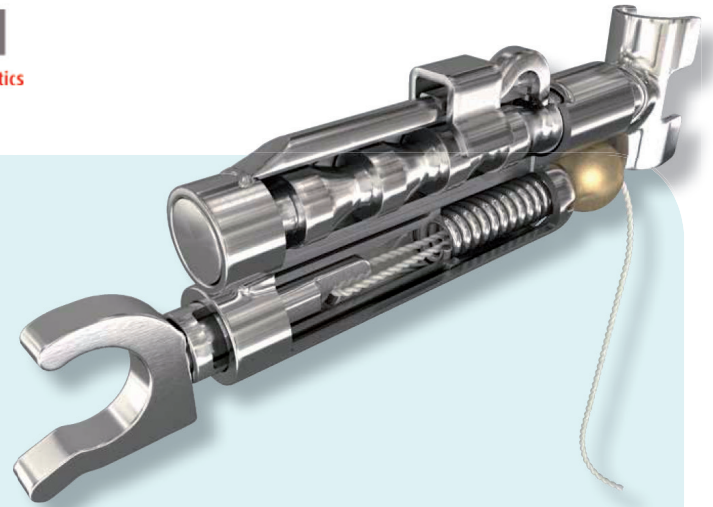
by Tiger Dental  
Innovations in orthodontics

The TopJet is a unique molar distalizer as it can be inserted easily chairside with absolut no laboratory step.

If used unilaterally only one orthodontic mini-implant (OMI) is necessary to anchor it.

Insertion time usually is around 10 minutes including the placement of the OMI's.

With 250 cN or 350 cN the handler has two strength sizes available and the TopJet clix is also available as a special model in a longer length of more than 8 mm. With full spring tension the smallest installation distance between mini anchor screw and trans-palatal arch is 14 mm, with the largest being 28 mm. With 0.8 mm/month a molar can be distalised by up to 15 mm using TopJet clix.



ECT0510 - Topjet Clix Distalizer 250g



ECT0511 - Topjet Clix Distalizer 250g + 8mm



ECT0512 - Topjet Clix Distalizer 360g



ECT0513 - Topjet Clix Distalizer 360g + 8mm

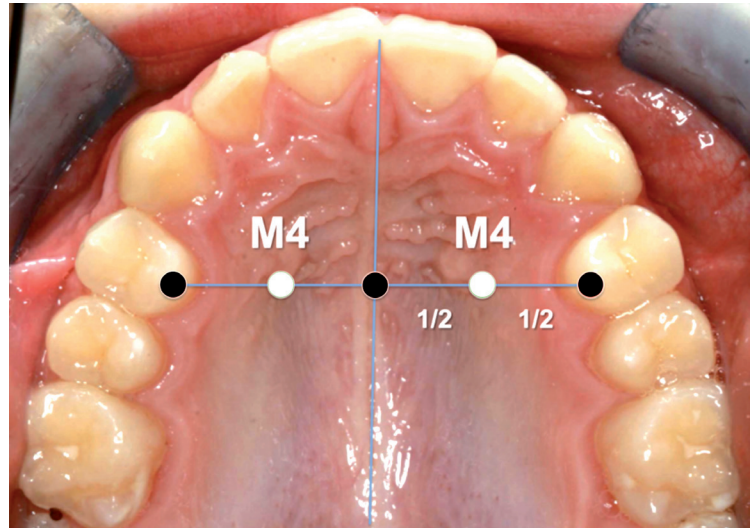
# TopJet Distalizer

by **Tiger Dental**  
Innovations in orthodontics

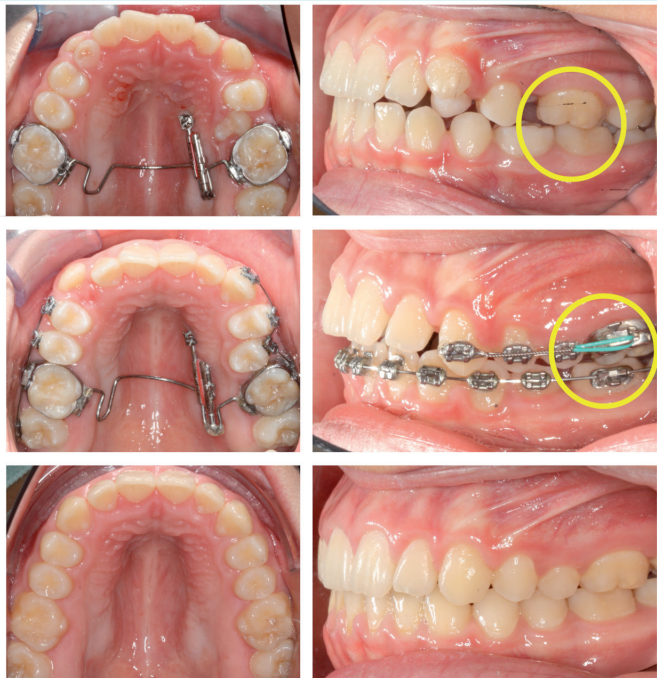
Since 2005 these orthodontic mini-implants (OMI) have become an essential part of the orthodontic treatment concept.

For the patient it appears like a small piercing that will later be removed without a visible mark. Most of them are being placed in the anterior palate, as this region between the four upper premolars is free of roots and larger vessels and has an average bone depth of 5-10 millimeters.

This ensures the secure fit of these OMI. Insertion in the so-called M4 position (1) QUOTE (Figure 1) is safe, easy and fast.



1. Winsauer H, Vlachojannis C, Bumann A, Vlachojannis J, Chrubasik S. Paramedian vertical palatal bone height for mini-implant insertion: a systematic review. *European Journal of orthodontics*. 2014;36(5):541-9.



2. Winsauer H, Muchitsch AP, Winsauer C, Milnes R, Vlachojannis J, Walter A. The TopJet for routine bodily molar distalization. *Journal of clinical orthodontics JCO*. 2013;47(2):96-107; quiz 39-40.

The TopJet Distalizer (2) QUOTE generates 360cN (=grams) of constant distalizing force and is used unilaterally or bilaterally in the plane of the center of resistance. This way it allows bodily distalization of the buccal teeth.

For unilateral use only one single OMI is required. For reactivation a simultaneous dual function allows force restitution and at the same time extension of the TopJet to the palatal arch. This is done simply by advancing the double tube with a hooklet probe. Besides being compliance free this treatment is also aesthetically pleasing.

After completion of distalization the same two OMI can continuously be used for anchoring a hybrid expander to do a bone-borne rapid palatal expansion. This will provide additional space.









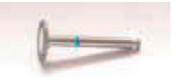

These expanders can remain in the mouth for up to two years in addition to retain the transverse maxillary dimension. At the same time they guarantee the retention of distalization.

# TopJet Distalizer

by Tiger Dental  
Innovations in orthodontics

## Starter Kit ECT0500 and ECT0501

Topjet 250g      Topjet 360g

-  **TopJet clix Distalizer**  
250 ou 360, 2 pc.
-  **Dual-Top JS**  
Ø: 2,0-JS-012 and 014 mm x2
-  **Bracket driver shaft**  
ECG0300 ou ECG0310
-  **ECT0514**  
Activation/deactivation
-  **ECT0515**
-  **T-Connector plier**  
ECT0516
-  **Triad-Gel 5g.**  
ECT0518
-  **Transpalatal arches**  
Assortment 7 sizes (ECT0521)
-  **Disque diamant**  
ECT0517
-  **TopJet clix Typodont**  
(optional)

the best selling Screws for TopJet are:  
ECG0701 JS TOP IMPLANT ø 2,0-JS-012 mm  
ECG0702 JS TOP IMPLANT ø 2,0-JS-014 mm

the ECG0700 JS TOP IMPLANT ø 2,0-JS-010 mm will be used not often, only if the gingiva is thin.

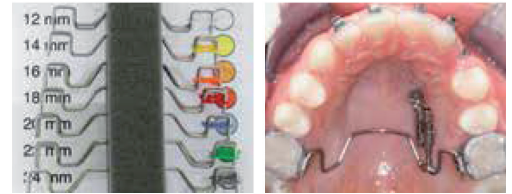
Combined method of treatment, e.g. Distillation + Expansion. If the doctor is planning to make firstly distillation and after it the expansion, then we recommend the items: ECG0703 JS TOP IMPLANT ø 2,5-JS-012 mm or the ECG0704 JS TOP IMPLANT ø 2,5-JS-014 mm

The ECG0705 JS TOP IMPLANT ø 2,5-JS-016 mm will be used the case of high patient's pallet.

## ECT0520 (+more sizes)

### Transpalatal arches

12,14,16,18,20,22 & 24mm or Assortment (ECT0521)



The **TopStop Space Maintainer** serves to anchor molars and provides ideal retention after prior distalisation with the TopJet. The TopStop Space Maintainer is available in the "direct" and "TPA" versions.



**ECT0411**  
TopStop direct - 2 sides



**ECT0410**  
TopStop TPA - 1 side



**ECT0510** Topjet Clix Distalizer 250g



**ECT0511** Topjet Clix Distalizer 250g+8mm



**ECT0512** Topjet Clix Distalizer 360g



**ECT0513** - Topjet Clix Distalizer 360g+8 mm

## (TAD) Dual-Top JS



Ref.	Dimensions
ECG0700	D 2.0X10mm
ECG0701	D 2.0X12mm
ECG0702	D 2.0X14mm
ECG0703	D 2.5X12mm
ECG0704	D 2.5X14mm
ECG0705	D 2.5X16mm



## Driver Shafts for (TAD) Dual-Top JS

ECG0300	Bracket driver shaft C.A.
ECG0310	Bracket driver shaft Manual

